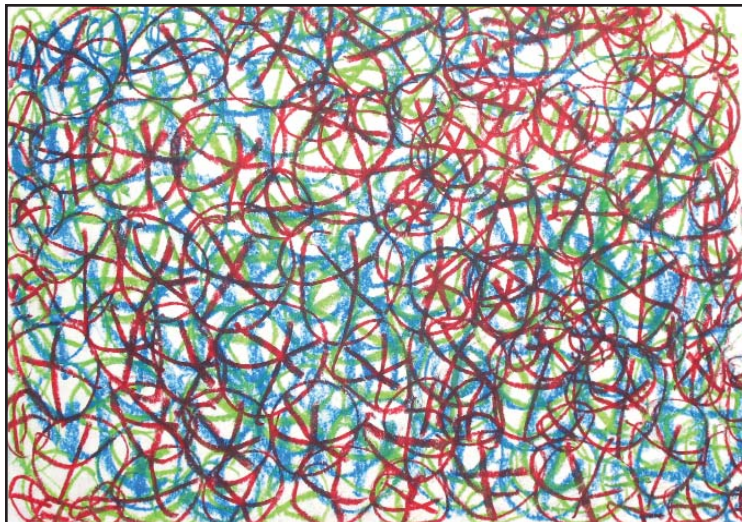


THE KENNEDY CENTER Holiday Card Collection

WWW.THEKENNEDYCENTERINC.ORG

NEW LARGER SIZE DESIGNS



JINGLE JANGLE
by: Wayne Thomas

size: 5" x 7"



WHISPERING PINES
by: Rakima Johnson

size: 5" x 7"



HARBINGER OF PEACE
by: Todd Carboni

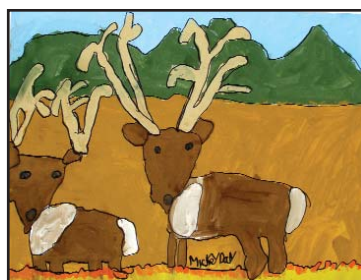
size: 5" x 7"



SERENE NIGHT
by: James Graves

size: 5" x 7"

CUSTOMER FAVORITES WHILE SUPPLIES LAST



Rocky Mountain Duo
by: Michael Daly
size: 4 1/2" x 6"



Everbrite
by: Debra Jean Willis
size: 4 1/2" x 6"



Sweet Expectations
by: Debra Jean Willis
size: 4 1/2" x 6"



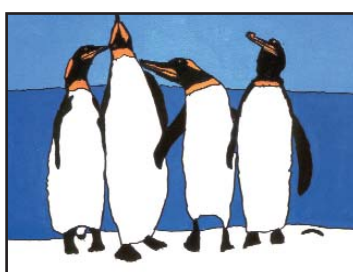
Homecoming
by: Donna Cecceralli
size: 4 1/2" x 6"



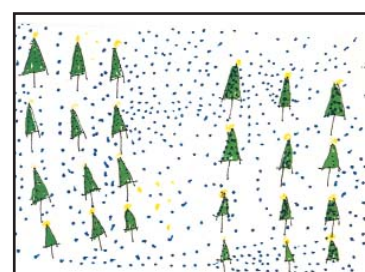
Chickadee Conga
by: Todd Carboni
size: 4 1/2" x 6"



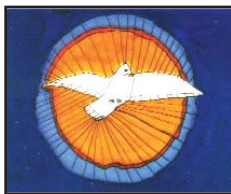
A Winter's Peace
by: Lisa Ellis
size: 4 1/2" x 6"



Talking Penguins
by: Todd Carboni
size: 4 1/2" x 6"



Miles to Go
by: Chris Matyasovszky
size: 4 1/2" x 6"



ABOUT THE KENNEDY CENTER

The Kennedy Center is a non-profit rehabilitation agency serving over 1,500 people annually with mental retardation, psychiatric disabilities, autism, traumatic brain injuries, visual and hearing impairments, as well as learning and physical disabilities.

All of the cards featured in this collection were designed by artists from The Kennedy Center. As individuals, these artists have transcended their disabilities to reveal their own unique style, creative ability, and spirit. These wonderful drawings, filled with optimistic strength, are an inspiration to us all.

The Kennedy Center is committed to providing quality supports toward inclusion of children and adults with disabilities so they may live fuller and more independent lives. Our innovative and comprehensive programming includes supports for children with special needs and their families as well as vocational, residential, recreational and educational activities for adults and seniors.

Your support of The Kennedy Center's Card Collection will make a big difference. It may allow a child with autism to participate in a group swim lesson at the community pool for the first time; or a young adult with mental retardation to learn simple reading and money management skills; or a senior with Alzheimer's disease to enjoy on a daily basis, a variety of programs and services at our senior center, and so much more.

Cost Per Card 5" X 7"	10-99 \$1.25 each	100-499 \$1.10 Each	500-999 \$.95 Each	1,000 or more \$.80 Each	Happy Holidays	Ink Color	TOTAL Quantity	TOTAL Price
* Card Imprint	\$.35 Each	\$.30 Each	\$.25 Each	\$.20 Each	N/C			
*Envelope Imprint	\$.25 Each	\$.20 Each	\$.15 Each	\$.10 Each	Yes	No		
Jingle Jangle								
Whispering Pines								
Harbinger of Peace								
Serene Night								
Cost Per Card 4 1/2" X 6"	10-99 \$1.00 each	100-499 \$.90 Each	500-999 \$.80 Each	1,000 or more \$.65 Each	Happy Holidays	Ink Color	TOTAL Quantity	TOTAL Price
* Card Imprint	\$.35 Each	\$.30 Each	\$.25 Each	\$.20 Each	N/C			
*Envelope Imprint	\$.25 Each	\$.20 Each	\$.15 Each	\$.10 Each	Yes	No		
Rocky Mountain Duo								
Everbrite								
Sweet Expectations								
Homecoming								
Chickadee Conga								
A Winter's Peace								
Talking Penguins								
Miles to Go								
2008 CALENDAR	PRICE PER CALENDAR \$10 - CALL FOR QUANTITY DISCOUNTS 203-332-4535, X207							
GRAND TOTAL								

*Cards are available with "Happy Holidays" inside greeting for no extra charge (black ink only).

*Imprinting is available for inside greeting and envelopes for orders of 50 or more in red, blue, or black ink.

THE KENNEDY CENTER CARD ORDER FORM

Ship to: _____ Bill to: _____
 Address _____ Address _____
 City _____ State _____ Zip _____ City _____ State _____ Zip _____
 Daytime Phone _____ Daytime Phone _____
 Method of Payment: Check Enclosed _____ **Please Make Check Payable to The Kennedy Center**
 CREDIT CARD VISA MASTERCARD AMERICAN EXPRESS
 CREDIT CARD # _____ Expiration Date _____ Signature _____

Orders are available in packages of 10 or by bulk. **NEW** selections are 5" X 7" and past designs are 4 1/2" x 6" in size. All prices include tax and shipping charges. **Camera artwork is required for any company logo.**

PHONE ORDERS: 203-332-4535, EXT. 207

FAX ORDERS: 203-332-4545

EMAIL ORDERS to: gfiore@kennedyctr.org

or MAIL ORDERS to:

The Kennedy Center Card Department, 39 Lindeman Drive, Trumbull, CT 06611

CARD IMPRINT:

LINE 1: _____
 LINE 2: _____
 LINE 3: _____

ENVELOPE IMPRINT:

LINE 1: _____
 LINE 2: _____
 LINE 3: _____